

The Quick Picture feature allows you to create activities on which you can dynamically change the symbols on various buttons.

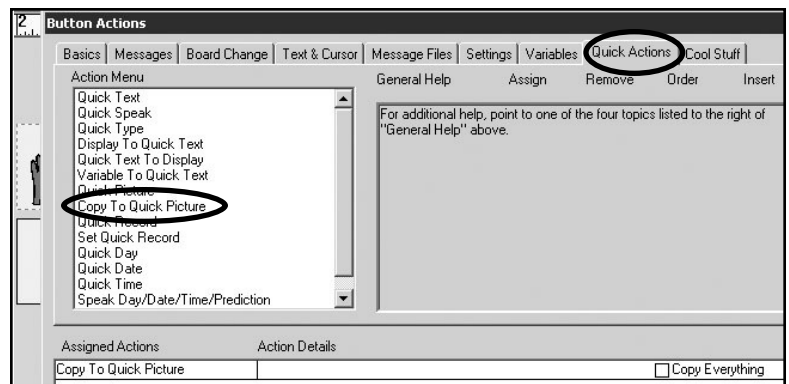
Creating Copy to Quick Picture Buttons

The **Copy to Quick Picture Button** will hold the pictures that you can place in a different location.

- a. **Double click** on the button with the picture you want to place elsewhere.
- b. From the **Quick Actions Action Menu** select **Copy to Quick Picture**. Select **OK**.

1

- * Note- You have the option to check the box **“Copy Everything.”** If this option is checked, the entire contents of the button will be copied.



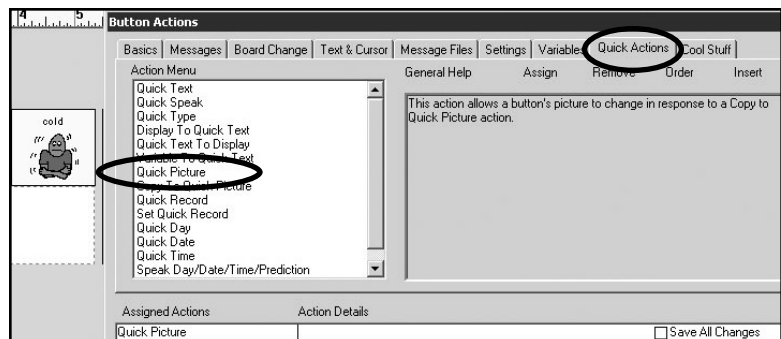
Creating Quick Picture Buttons

The **Quick Picture Button** is the location where you want to place the picture from the “Copy to Quick Picture Button.”

- a. **Double click** on the button where you want to place the picture.
- c. From the **Quick Actions Action Menu** select **Quick Picture**. Select **OK**.

- * Note- You have the option to check the box **“Save All Changes.”** If this option is checked, an activity will be immediately saved after a Quick Picture is set on that button.

2



Using Quick Picture

- Go into the **Use Mode** (CTRL-U).
- Click on the button you have designated as a “Copy to Quick Picture Button.” Then, click one of the buttons that you have designate a “Quick Picture Button.”
- The Symbol (and/or text) should enter that button!

3

